



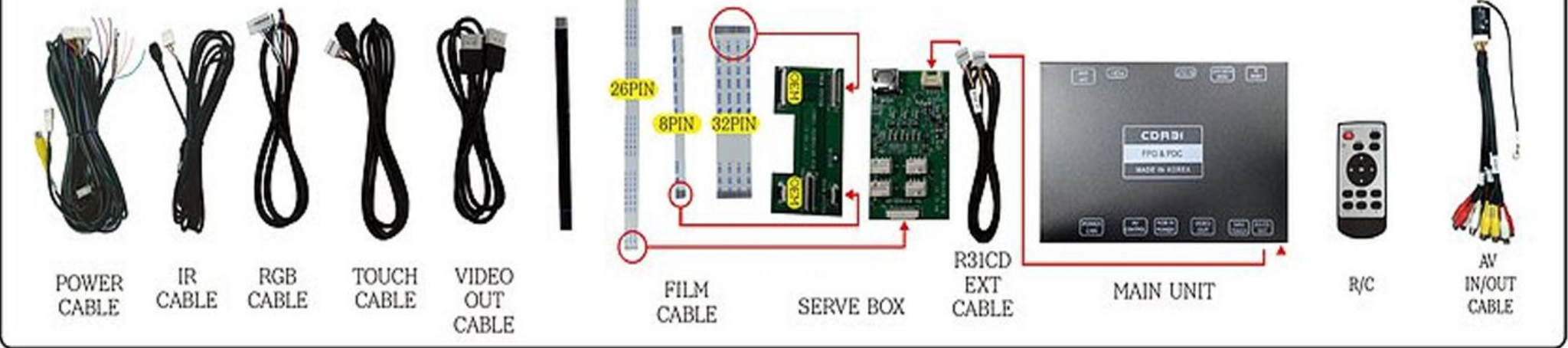
Apple CarPlay / Android Auto Integration

PORSCHE CDR 3.1
(Low res-Monitor)

CAYENNE 2010 - 2011
PANAMERA 2010 - 2011



[COMPONENTS]



Android Main box



AV Cable



RGB Cable



4 PIN Touch cable



Power Cable



HDMI Cable



WiFi & GPS Antenna



DIP SWITCH SETTING - Main Interface box



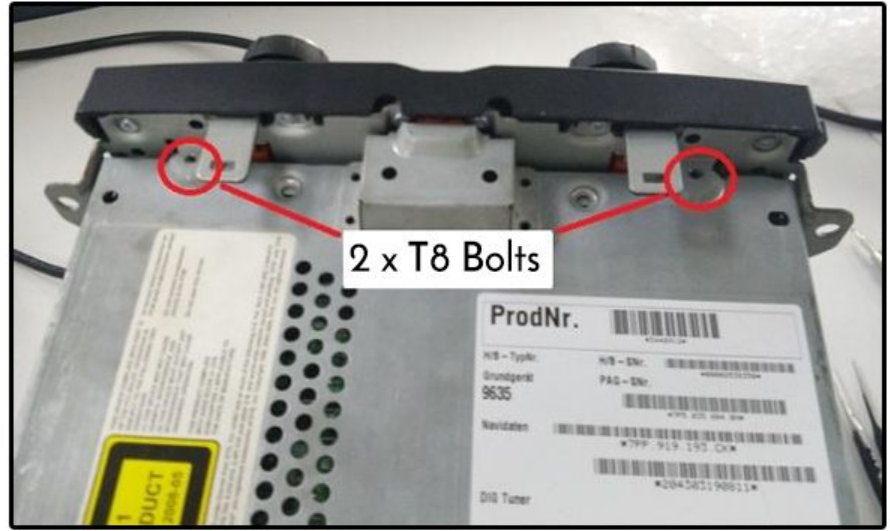
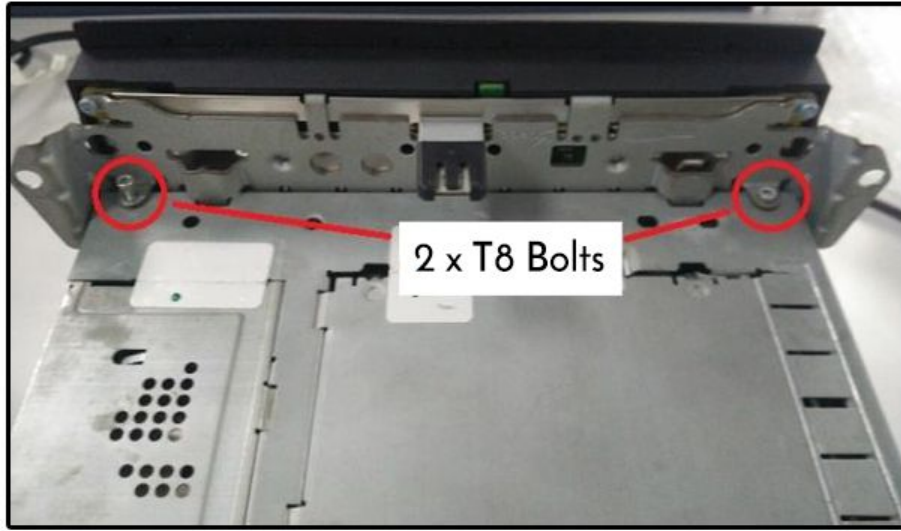
For Porsche CDR 3.1

All DIP Switches are off except 1 , 9 and 10

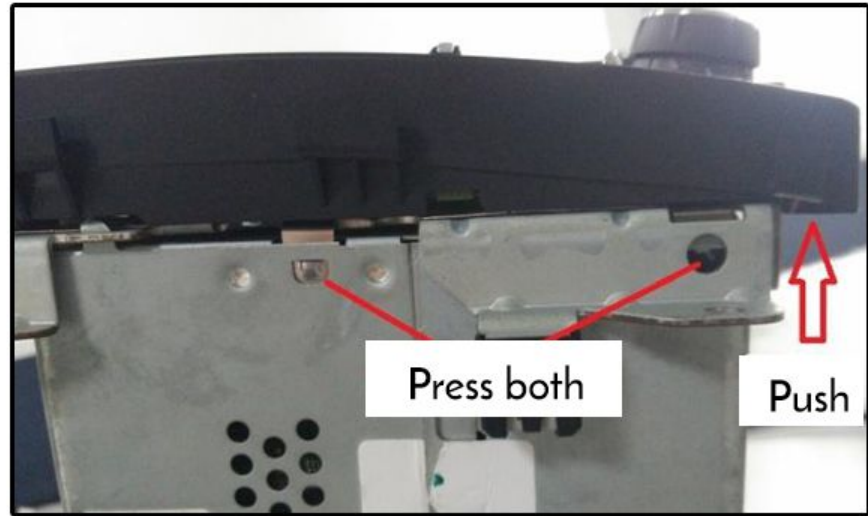
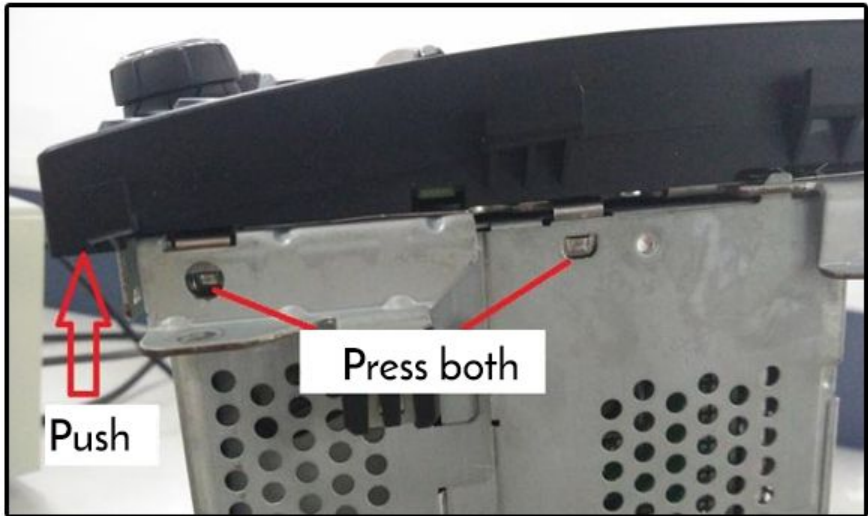
Make sure you've set the **DIP Switch**
Before you connect the power to the Interface.

And every time **DIP Switch** gets adjusted.
Please disconnect and reconnect power cable
to reboot

Audio unit integration

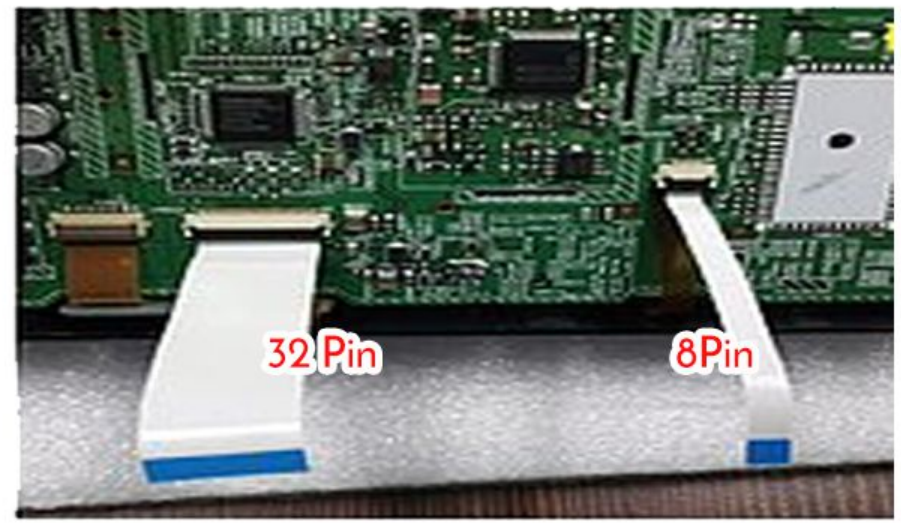
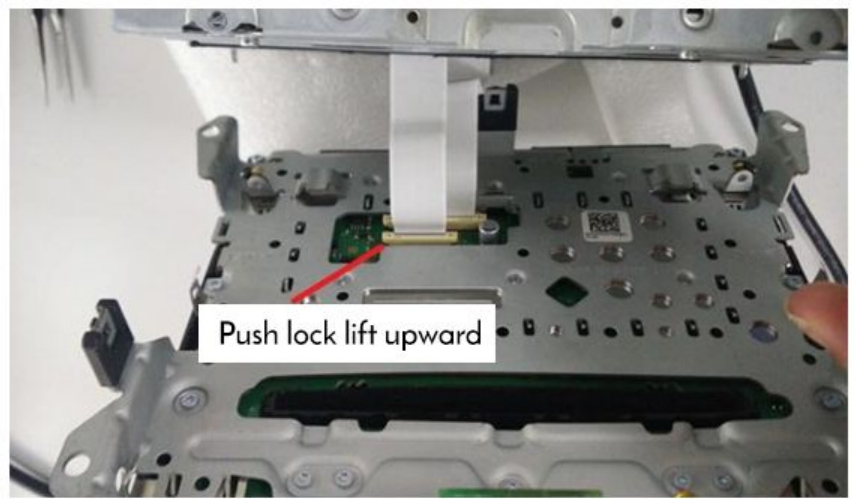


1. Remove those 4 T8 bolts, from each top & bottom of the CDR Headunit.

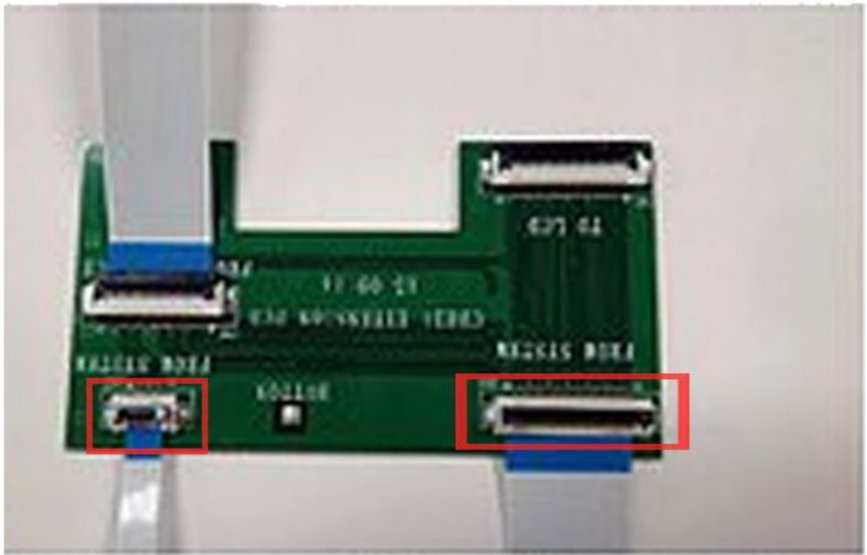


2. Press those latches on each sides, and push the monitor to remove it from the headunit.

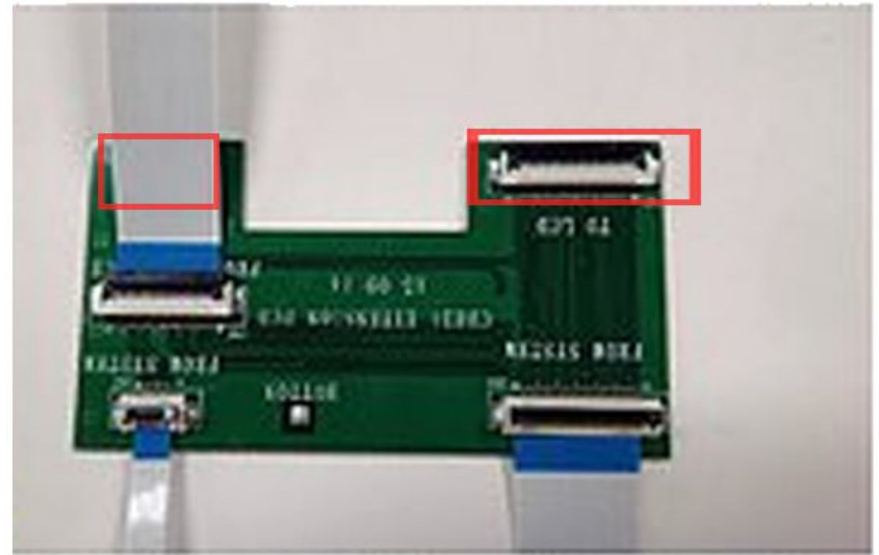
Interface Board bypass - 1



Disconnect original film cables and connect 8Pin & 32 pin Ribbon films.



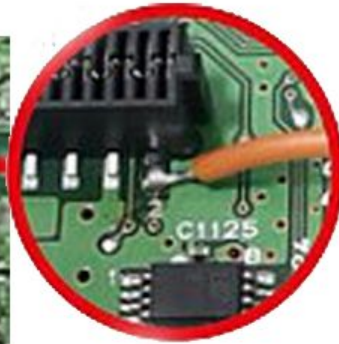
Connect those other ends of ribbon films to provided sub board.



The original film cables will be connected on other side of the sub board.



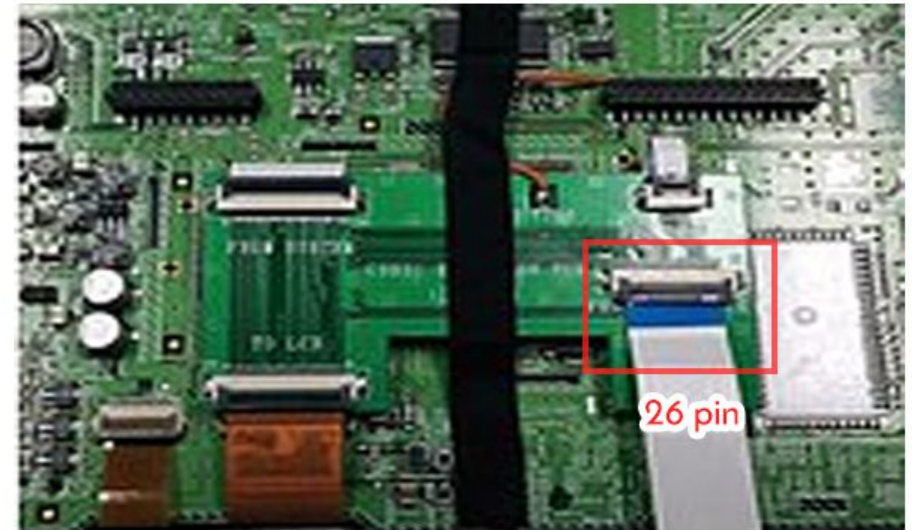
Interface Board bypass - 2



The Orange wire will be provided for soldering between the Sub board and circled pin from main audio board.

This is only necessary if you wish to use factory Return button from Audio commander.

If this method gets skipped, an external switch can be used for switching screen



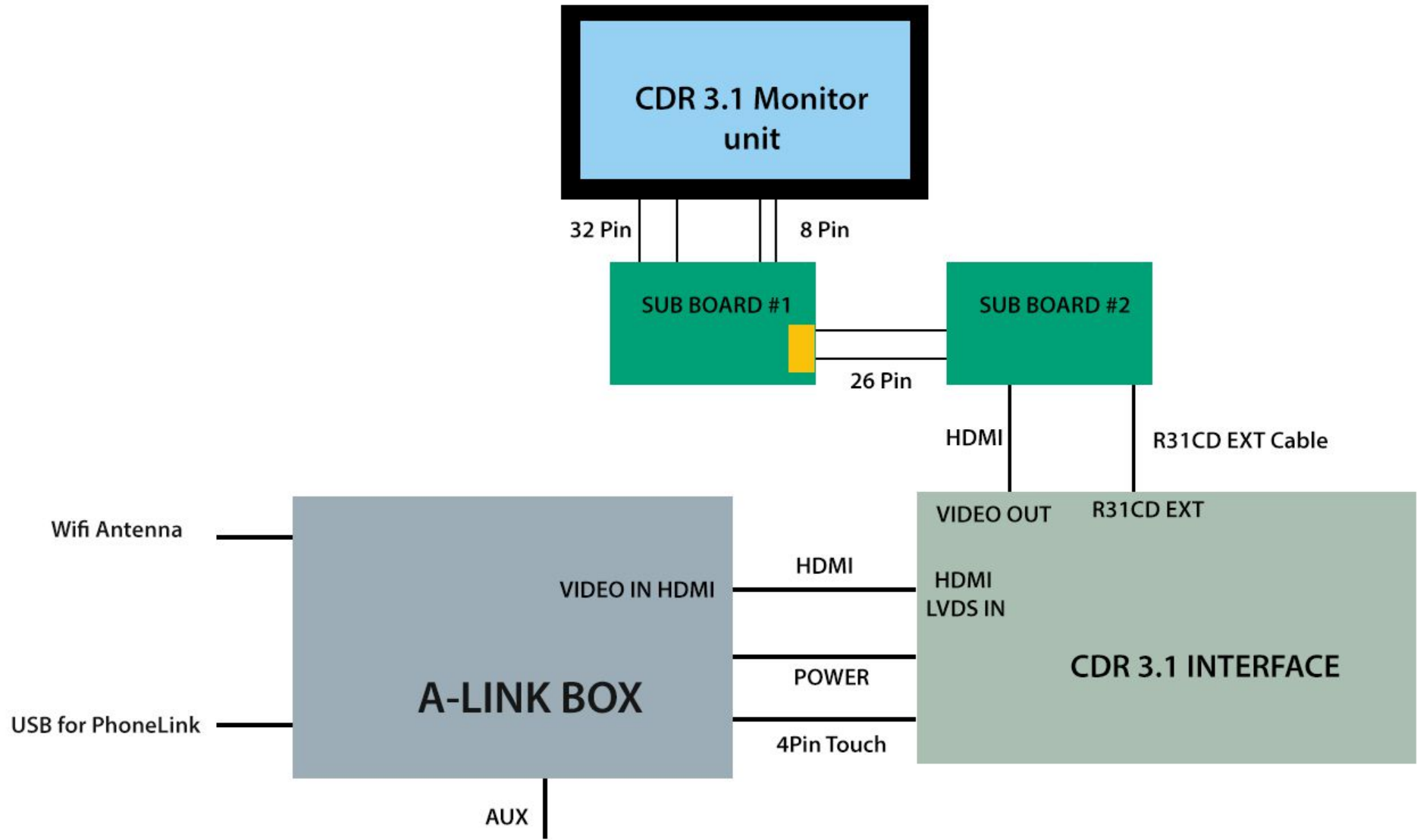
Once all is done, use the fabric tape to hold the sub board with the main board.

And connect the provided 26 Pin film cable.

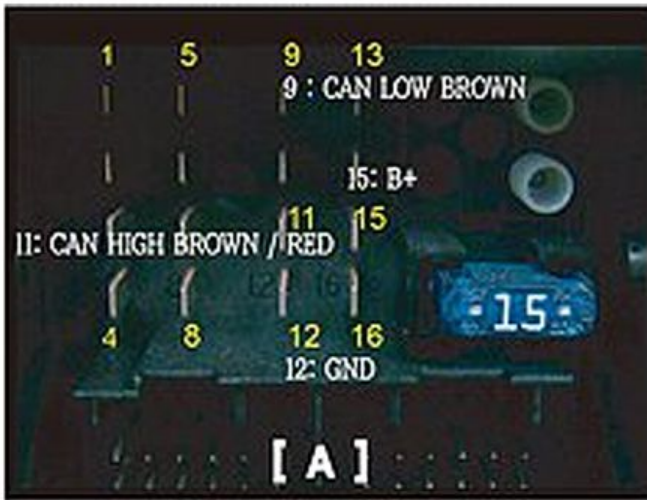


With the 26 pin film, connect its other end to the 2nd sub board.
And once secured with film's exit towards outside of the head unit, reassemble the whole headunit.

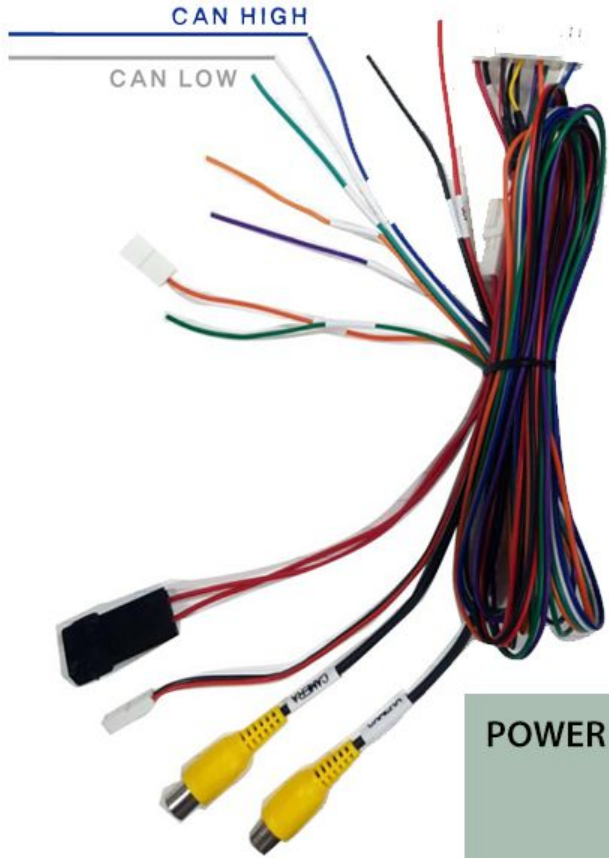
Interface Connection - Diagram



Interface Connection - Diagram -2 / CAN wiring from main quadlock



- No.9 : CAN LOW BROWN (CAN)
- No.11: CAN HIGH BROWN / RED (CAN)
- No.12: GND
- No.15: B+



POWER / CAN Cable

CDR 3.1 Interface

Tap those CAN HIGH / LOW wires from Main cable, to main audio harness's CAN HIGH & LOW Wires.



NAVI_SELECT

BEFORE YOU PROCEED:

1. WHILE POWER IS OFF :

Turn **DIP Switch no.1** from **CDR3.1 Interface box** is 'ON' - Facing down.

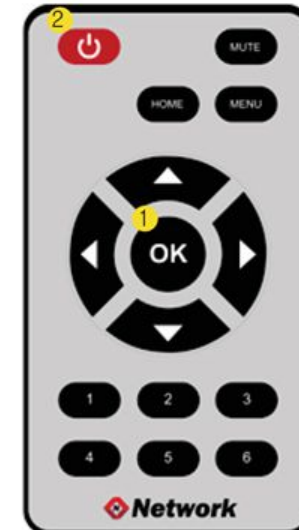
2. Connect IR Cable AND power cable to CDR 3.1 Interface Box



1-1. THE METHOD HOW TO ENTER TO OSD MENU

[Video OSD Menu] The method how to enter to Video OSD Menu is press ¹ **OK** button for 4 times by R/C, on Navi, AV1, AV2, AV3, HDMI modes. numbers will display per press on screen. Finally, Please press ² button to enter when the screen appear number 4.

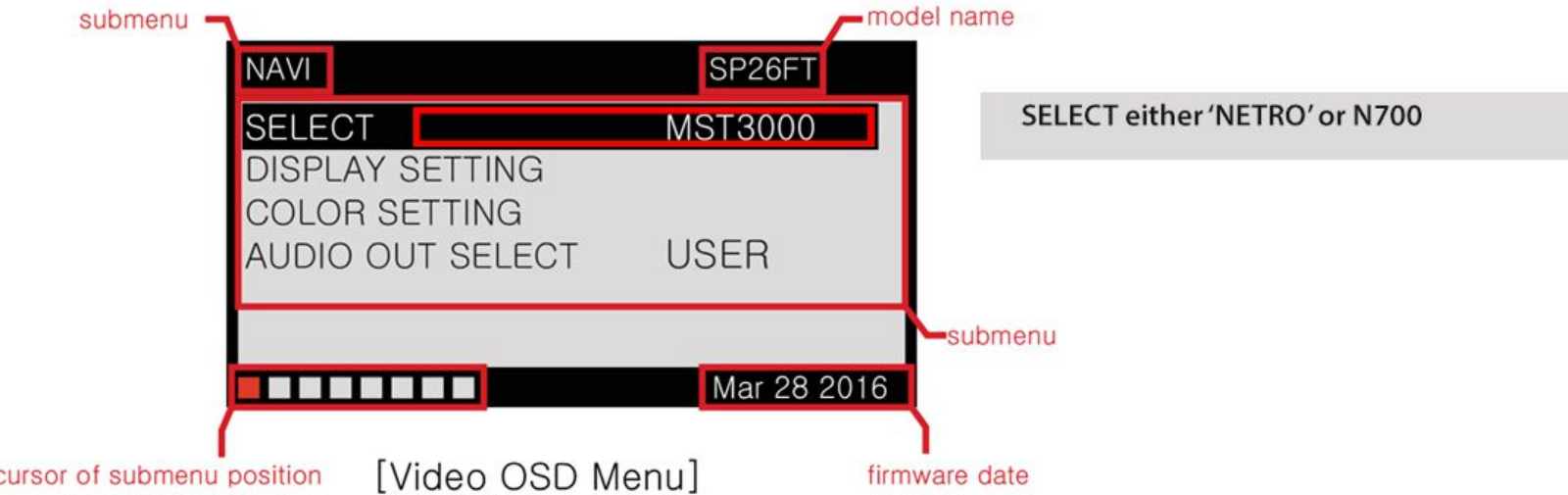
1 ► 1 ► 1 ► 1 ► 2



[INTERFACE R/C]



NAVI_SELECT



1. OSD menu will show up on commanding with remote.
You will need to access to NAVI_SELECT submenu, using arrow buttons of Remote.

2. From select - find either 'NETRO' or 'N700'.

then exit the OSD.



HOW TO SWITCH TO Apple CarPlay / Android Auto VIEW MODE

1. If the soldering was done between main board and SUB board:

Double press of Return button will switch between CarPlay & Android Auto and CDR Radio mode.

2. If soldering wasn't done:

Use external button switch.

