



Apple CarPlay / Android Auto Integration

**PORSCHE PCM 3.1 AUDIO
CAYENNE 2010 - ONWARD**



DIP SWITCH SETTING - Main Interface box



For Porsche PCM 3.1:

All DIP Switches are off except 8.

Make sure you've set the DIP Switch Before you connect the power to the Interface.

And every time DIP Switch gets adjusted. Please disconnect and reconnect power cable to reboot



Components

1 MAIN UNIT



2 MAIN CABLE



3 RGB CABLE



4 IR CABLE



5 MINI LVDS CABLE



6 REMOTE CONTROL



7 TOUCH CABLE



8 SERVE BOARD(R31FP)



9 4PIN FILM



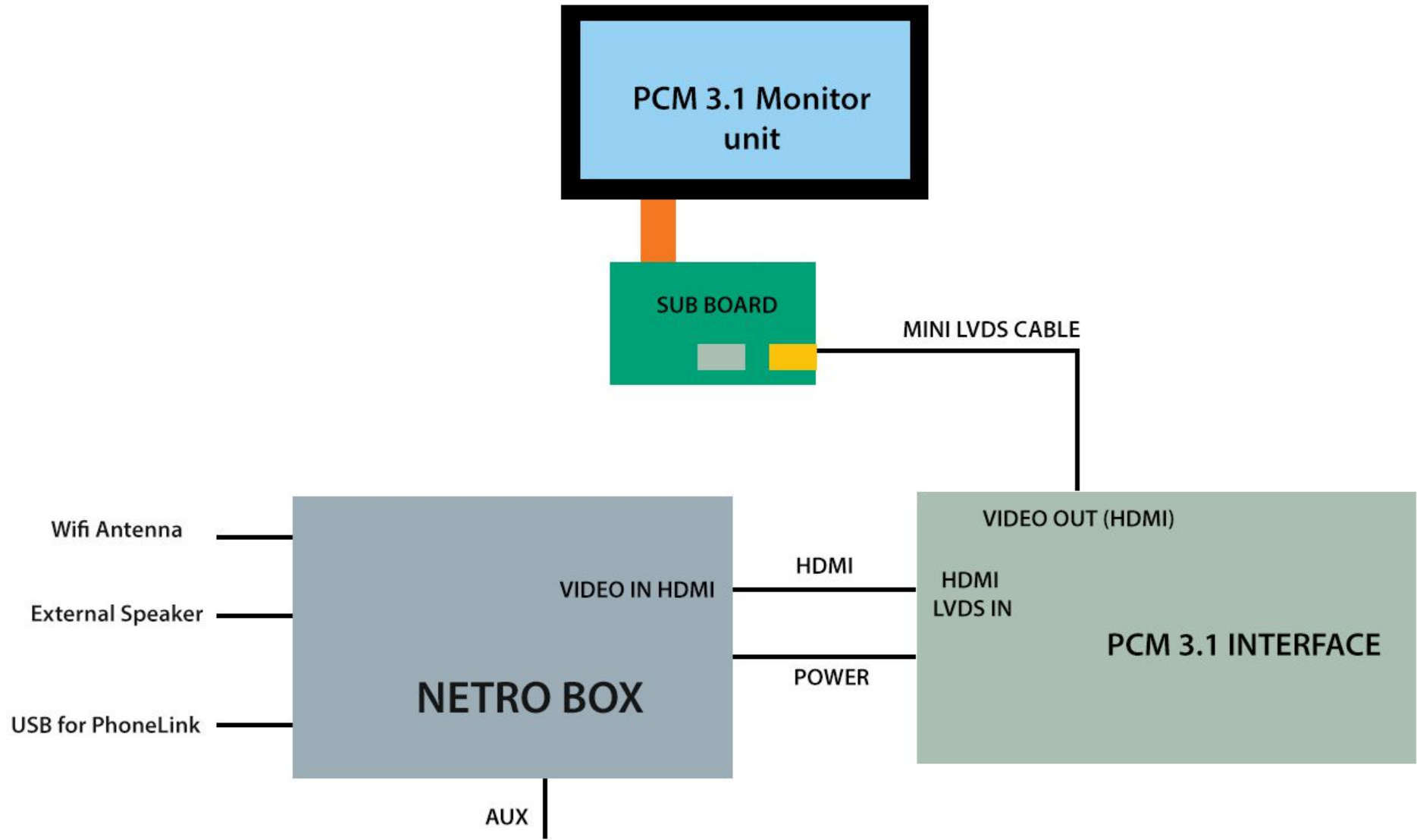
10 FPC FILM(E31FP)



11 FPC FILM(PCM3.1-2)

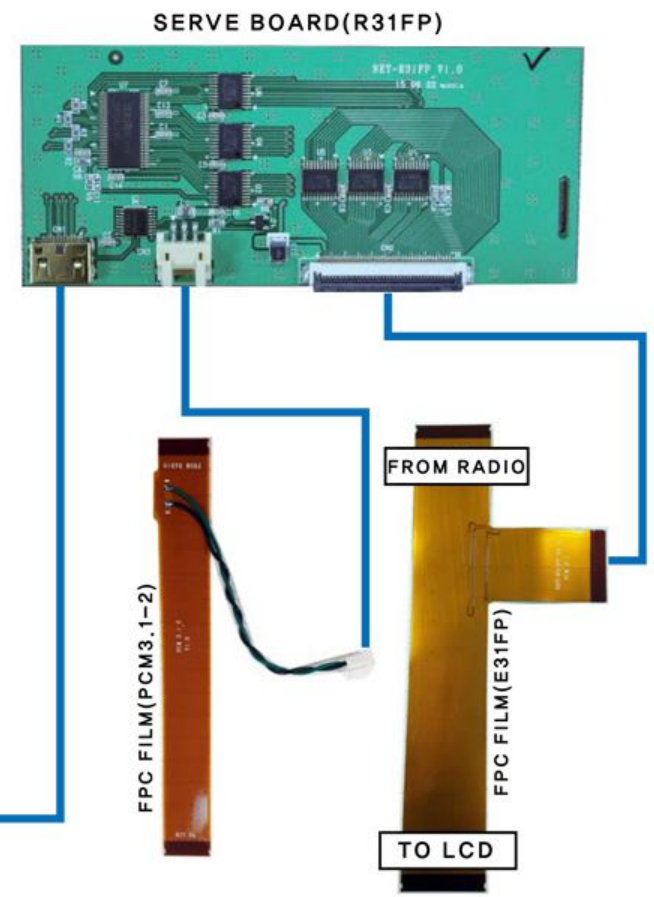
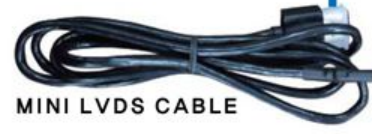
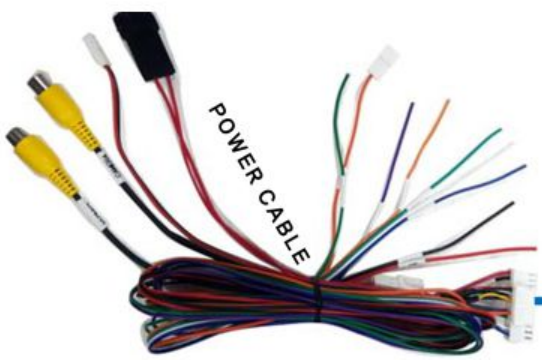


Interface Connection - Diagram



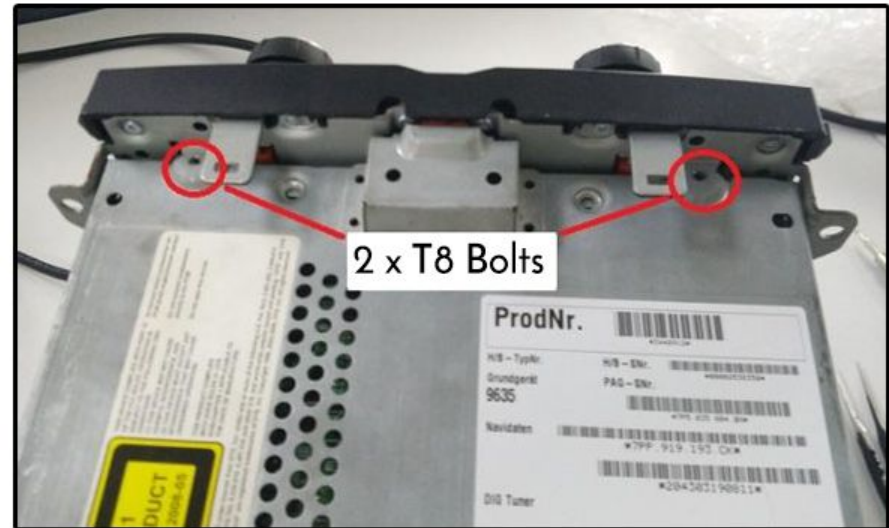
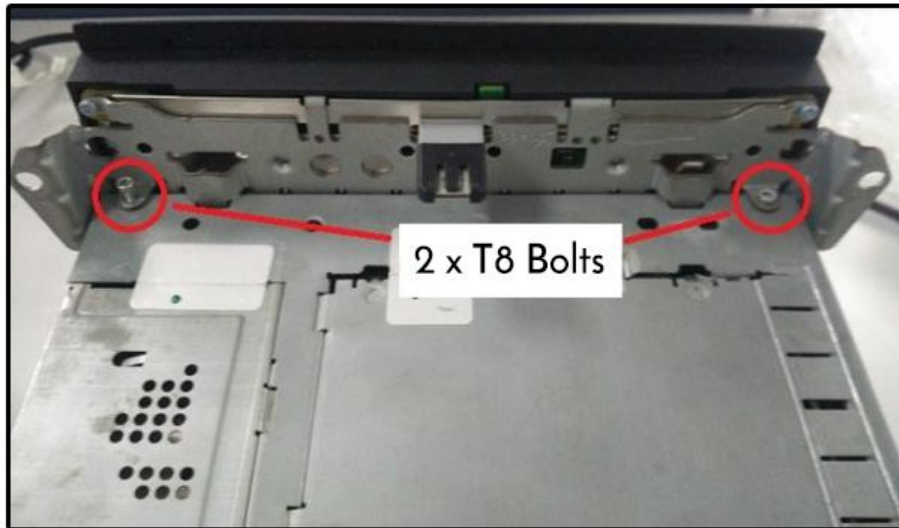


HOW TO CONNECT (PCM3.1 H HDMI)

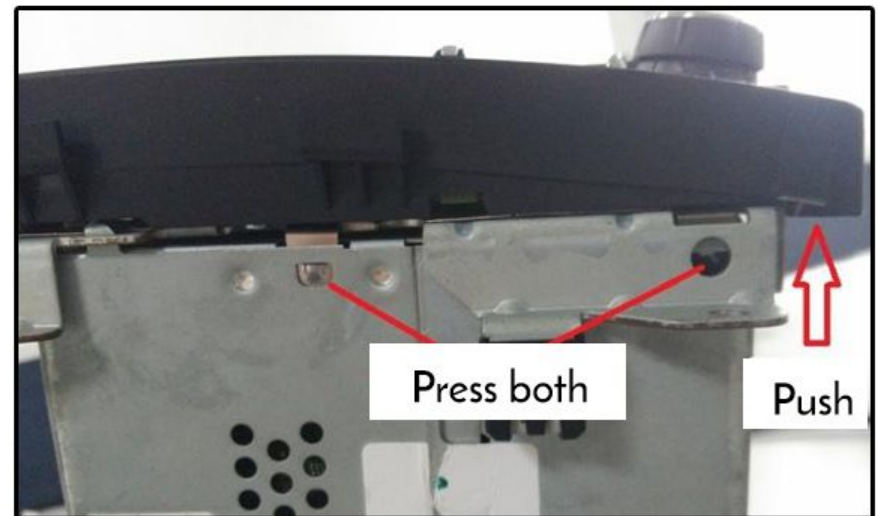
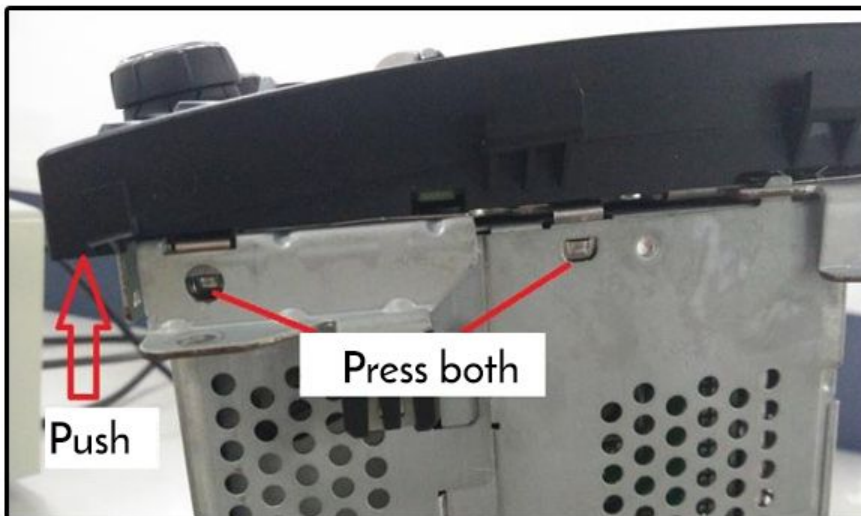




Audio unit integration

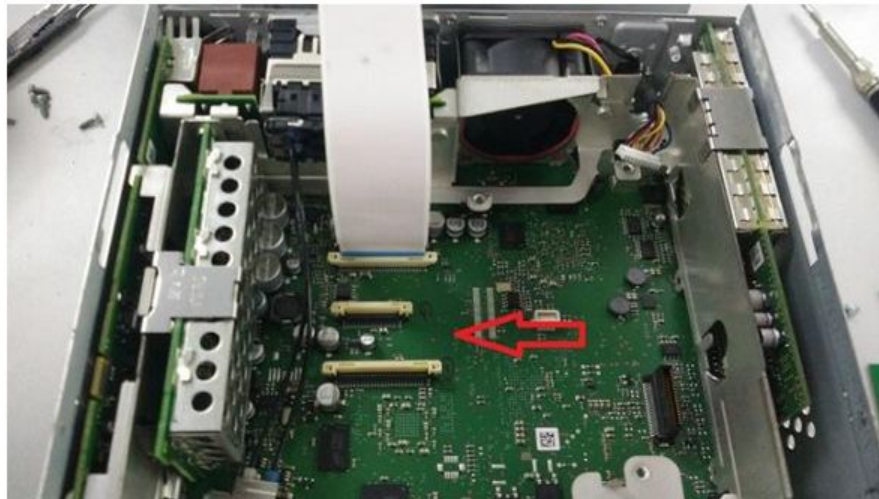
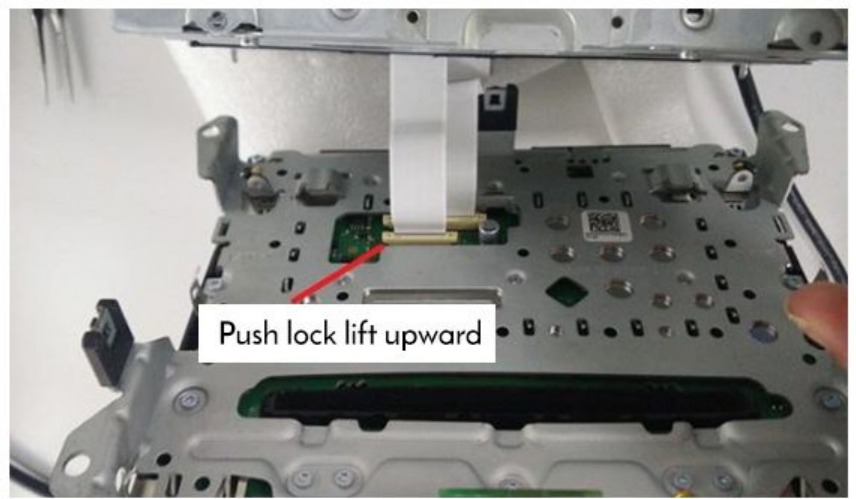


1. Remove those 4 T8 bolts, from each top & bottom of the PCM Headunit.

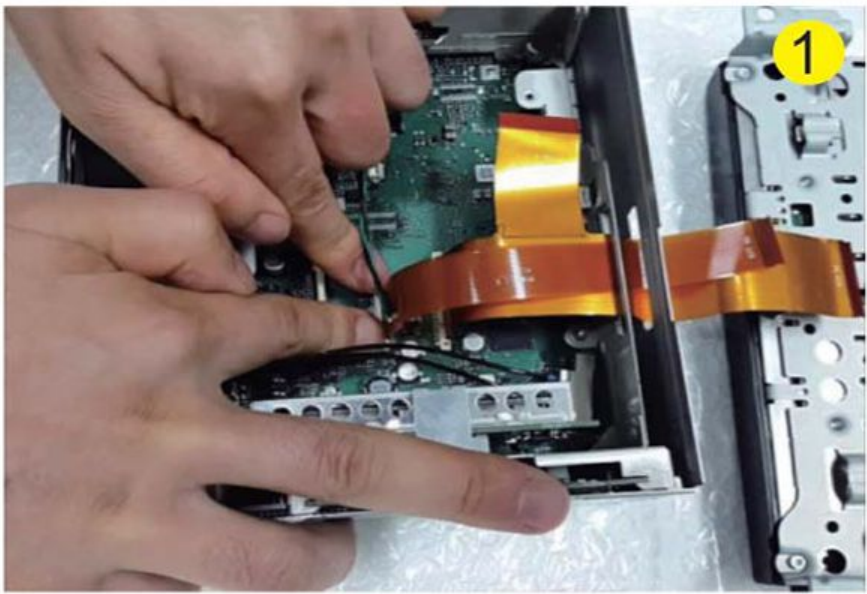


2. Press those latches on each sides, and push the monitor to remove it from the headunit.

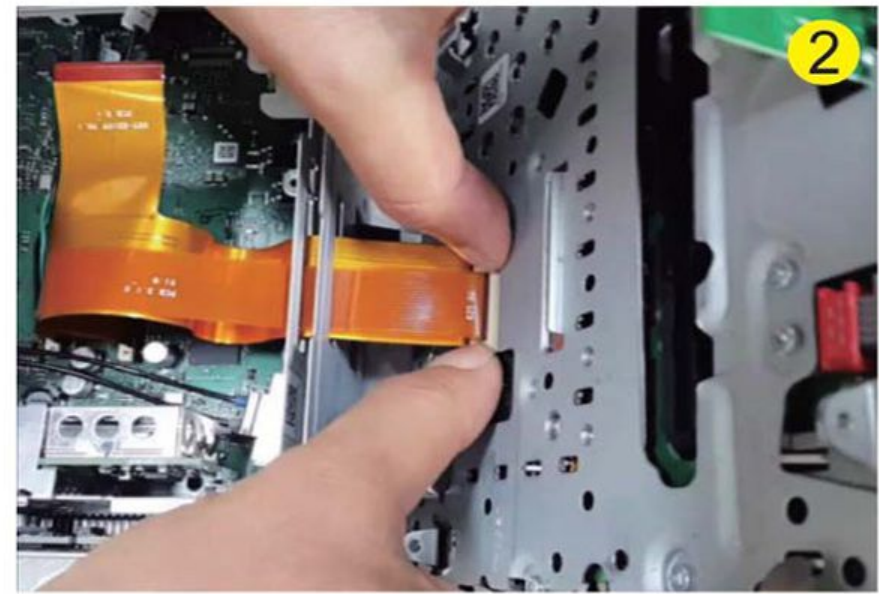
Interface Board bypass - 1



Disconnect original film cables

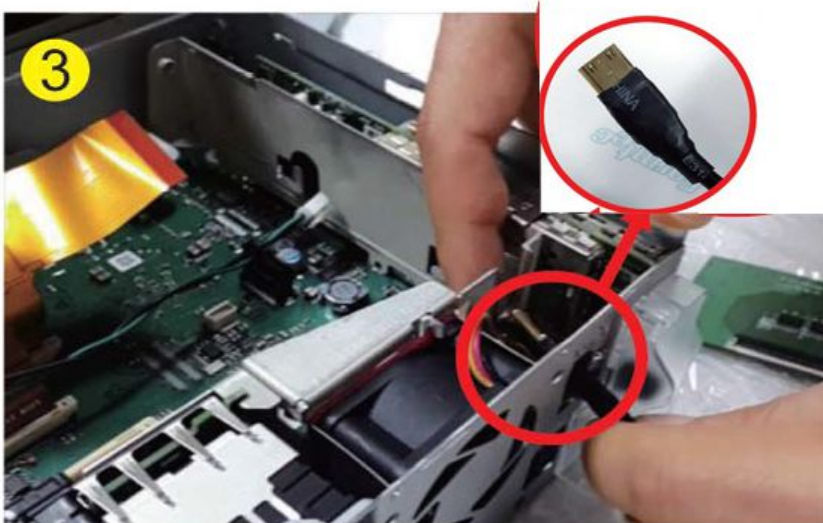


Connect provided film cables both PCM3.1-2 and E31FP films to the main board of the PCM 3.1 Headunit, after original films removed.

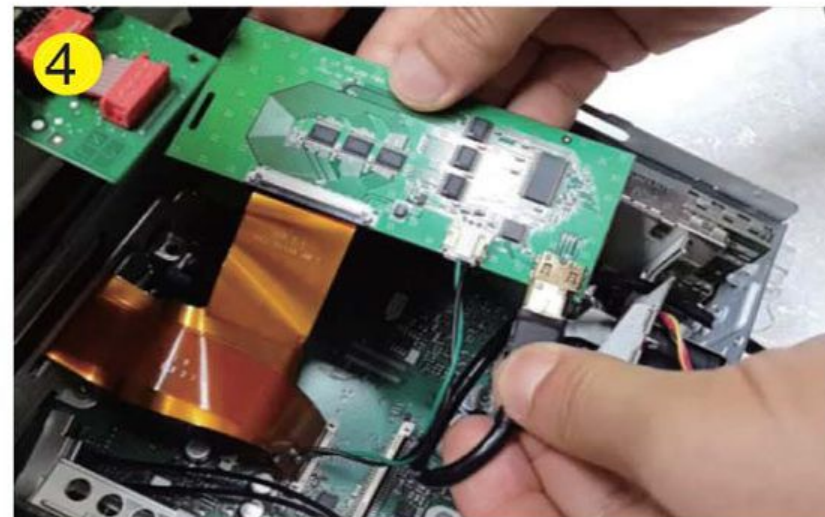


Connect those other ends to the socket of the monitor display (LCD)

Interface Board bypass - 2

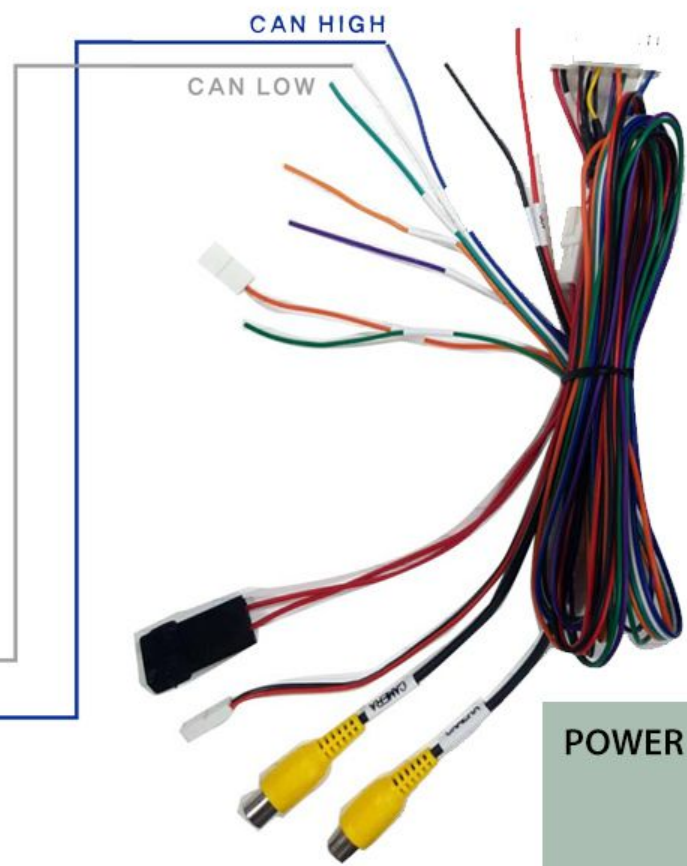
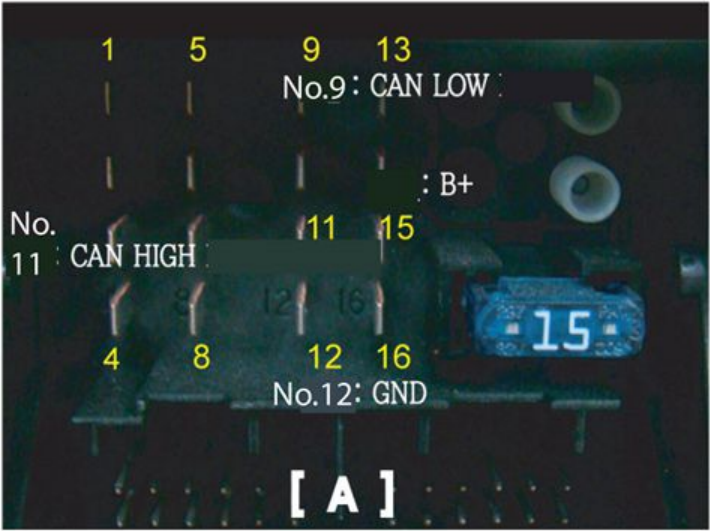


Remove the cover from the back of the audio - which allows the Mini LVDS cable to go through.



Connect it to the Sub board along with those bypassed film cables. and then reassemble the PCM unit.

Interface Connection - Diagram -2 / CAN wiring from main quadlock



No.9 : CAN LOW
No.11: CAN HIGH
No.12: GND
No.15: B+

POWER / CAN Cable

PCM 3.1 Interface



BEFORE YOU PROCEED:

1. WHILE POWER IS OFF :

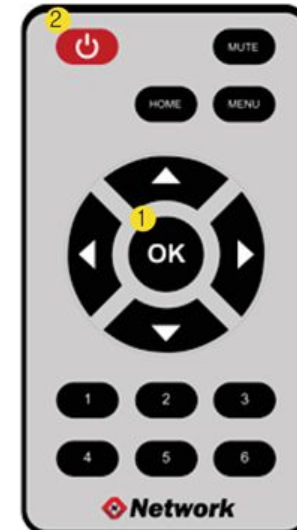
Turn **DIP Switch no.1** from **PCM3.1 Interface box** is 'ON' - Facing down.

2. Connect IR Cable AND power cable to PCM 3.1 Interface Box



1-1. THE METHOD HOW TO ENTER TO OSD MENU

[Video OSD Menu] The method how to enter to Video OSD Menu is press ¹ **OK** button for 4times by R/C, on Navi, AV1, AV2, AV3, HDMI modes. numbers will display per press on screen. Finally, Please press ² button to enter when the screen appear number 4.



[INTERFACE R/C]



1. OSD menu will show up on commanding with remote.
You will need to access to NAVI_SELECT submenu, using arrow buttons of Remote.

2. From select - find either 'HD-G2' or 'N700'.

then exit the OSD.



HOW TO SWITCH TO Apple CarPlay / Android Auto VIEW MODE

1. Once NAVI SELECT has been finished:

Disconnect power cable & IR Cable from PCM3.1 Interface.
And Put the DIP Switch 1 to 'OFF' position.

2.

Reconnect power cable to PCM 3.1 box ,
and upon pressing NAVI button twice, It will switch to

Netro mode for CarPlay / Android Auto initiation.

